

Ideal for:
Underground Mines
Small Open Pit Mines / Quarries
Tyre Service
Ports

Easy Gripper 2400-2T

Save
time
Improve
safety



Professional tools for handling of OTR/EM tyres up to 35"

- Unique 3-point grip
- Horizontal/vertical tilt 90°
- Precise rotation +/-25°
- Prevent damage to tyres & rims
- Easy hook on/off attachment
- Customization available



Experts in Tyre Handling Equipment



Tyre service of OTR/EM

Developed for safe and efficient handling of smaller OTR/EM tyres and wheels.

Capability

With a gripping range of Ø2.400 mm (94") and a lifting capacity of 2 ton (4.400 lbs) at a CoG of 550 mm (22"), this Gripper can handle tyres up to 35". When you handle full wheel assemblies and as inside duals, the Gripper can handle up to 33" tyres depending of the kind of tyres and rims.



Underground mines

Solves issues with narrow space around the tyres. The 2 bottom pipes grip the tyre below the fender, and the top pipe can easily be changed to a flat arm to fit between tyre and fender.

Quarries

Reduces down time and improves the safety for the tyre technicians. See also the tools for handling the rings, when mounting or dismounting tyres.



Ports

This Gripper is big enough to handle tyres and wheels on Straddle Carriers, Reach Stackers and RTG cranes. With safety as a big issue.



Breakdown service

Used on front loaders, telehandlers or truck cranes you get a perfect solution to provide tyre service in the field. You can do the job without any equipment or assistance from your customer, do it faster and make a hard and risky work safe for your operators.



Forklifts



This version of the Gripper with the 90° tilt function is ideal for use on forklifts.

Front loaders and telehandlers



The Compact version without the tilt box is a good choice if the carrier can provide sufficient tilt.

Truck cranes



By use of our crane module, the Gripper can also fit with almost any truck crane system.



Standard features

Unique and safe 3-point grip

Avoid accidents

Avoid deformation and damages of tyres
Avoid damages of rims and of the equipment

Integrated IR-camera system for optimal view

Precise rotation $\pm 25^\circ$

Tilt function 90°, horizontal to vertical

Optional features

Quick Shift System

Easy hook on and off. Shift between Gripper and forks in less than half a minute.

Easy shift of gripping pipes for various purposes

Flat top arm for narrow space
Telescopic pipes for long reach or 2 tyres handling

Tools for handling rings, to help tyre technicians with the hard and dangerous work

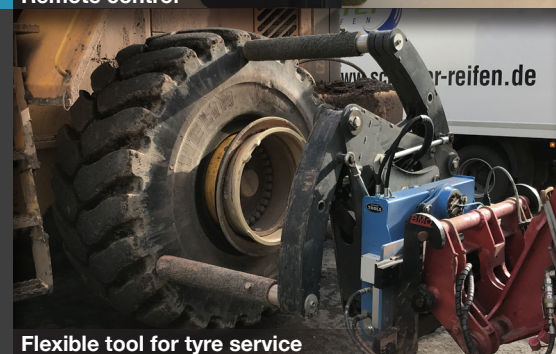
Can easily be attached at the end of the gripping pipes
Can push the tyre and can hold and place the ring

LED working light

Customization on request



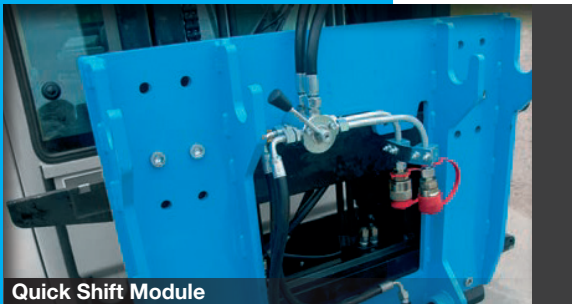
Remote control



Flexible tool for tyre service



Tools for handling rings and rims



Quick Shift Module



Hydraulic Quick Shift



Fork Module



Telescopic arms



Flat arm for narrow fenders

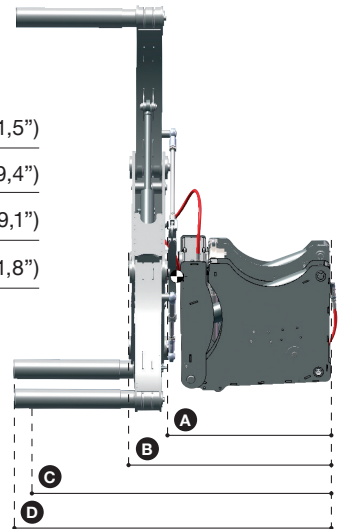


LED working light

Technical Specifications

Weight:	815 kg (1.797 lbs)
Lifting capacity:	2.000 kg (4.400 lbs)
Tyre diameter:	1.450 - 2.400 mm (57-94")
Tyre diameter special arms:	min. 1.080 mm (43")
Standard arms:	Ø 115 x 650 mm (4,6 x 25,6")
Telescopic arms up to:	1.375 mm (54")

- A** Cg Gripper = 800 mm (31,5")
- B** Rear of Load = 1.000 mm (39,4")
- C** Cg Load = 1.550 mm (59,1")
- D** Length = 1.620 mm (61,8")



Technical Requirements of forklift or loader

Lifting capacity:	Individual calculation
Electrical:	12 V supply
Hydraulic:	1 double acting connection
Pressure min-max:	150-250 bar (2.175-3.626 psi)
Return pressure:	max. 10 bar (145 psi)
Flow:	max. 50 l/min. (13 gal/min.)

Authorized Dealer



+45 72 344 344
 info@justeasytools.dk
 www.justeasytools.dk
 VAT no.: DK33644809

Just Easy Tools ApS
 Nupark 51
 DK-7500 Holstebro
 Denmark