

Ideal for:
Open Pit Mines
Tyre Manufacturers / Dealers
Tyre Service
OEM

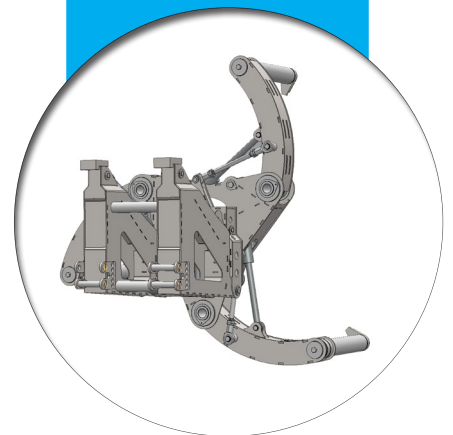
Easy
Gripper
3100-4T

Save
time
Improve
safety



Professional tools for handling of OTR/EM tyres up to 33.00R51

- Unique 3-point grip
- Tilt function 90°
- Precise rotation +/-25°
- Prevent damage to tyres & rims
- FEM IV/V, Terminal Vest & loader attachments
- Customization available



Experts in Tyre Handling Equipment



Tyre service of OTR/EM

Developed for safe and efficient handling manipulation and service of large OTR tyres and wheels.

Capability

With a gripping range of Ø3.100 mm (122") and a lifting capacity of 4 ton (8.800 lbs) at a CoG of 600 mm (23,6"), the Easy Gripper 3100-4T handles tyres up to 33.00R51. When handling full wheel assemblies as inside duals, the Gripper handles up to 27.00R49 tyres.



Open pit mines & quarries

Reduces down time and improves the safety for the tyre technicians. See also the tools for handling the rings, when mounting or dismounting tyres.

Tyre manufacturers/dealers

For use in tyre production, warehouse, loading and unloading. Gentle and safe handling – horizontal and vertical.



Tyre service

As stationary solution in open pit mines or as mobile solution mounted on front loader, telehandler or truck crane.

OEM

Handling of tyres and wheels from unloading to warehouse and assembly lines. Mounting of wheels with tilt, precise rotation and camera system.



Forklifts



The version of the Easy Gripper 3100-4T with the 90° tilt function is ideal for use on forklifts.

Front loaders and telehandlers



The Compact version, as the Easy Gripper without the tilt box, is a good choice if the carrier can provide sufficient tilt.

Truck cranes



By use of our crane module, the Gripper can also be fitted onto almost any truck crane system.

Standard features

Unique and safe 3-point grip

Avoid accidents
Avoid deformation and damages of tyres
Avoid damages of rims and of the equipment

Centerplaced Integrated IR-camera system

For optimal view and orientation

Precise rotation +/-25°

Tilt function 90°, horizontal to vertical

Optional features

Quick Shift System

Easy hook on and off. Shift between Gripper and forks in less than half a minute.

Easy shift of gripping pipes for various purposes

Telescopic pipes for long reach or 2 tyres handling

Tools for handling rings, to help tyre technicians with the hard and dangerous work

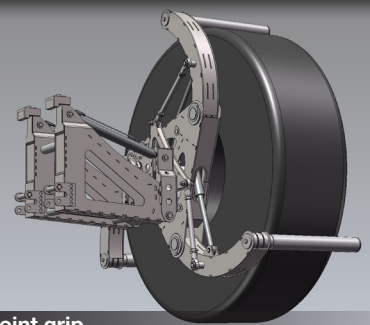
Can easily be attached at the end of the gripping pipes
Can push the tyre and can hold and place the ring

LED working light

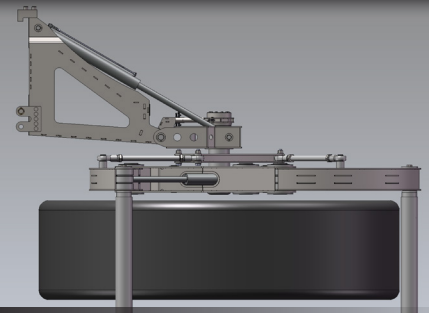
Multiple Integrated IR-camera system

For even more comprehensive and precise handling of tyres and rims.

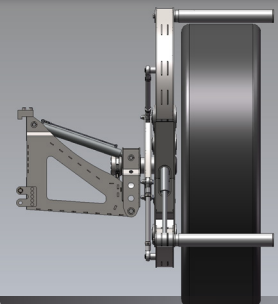
Customization on request



Safe 3-point grip



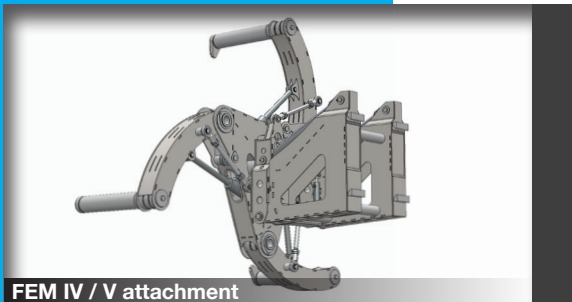
90° tilt



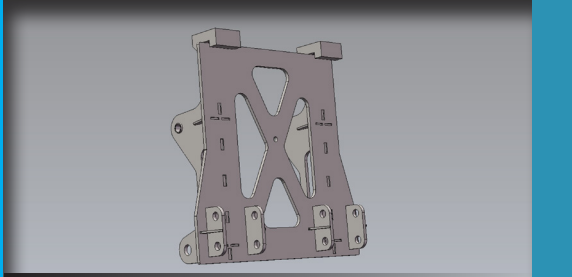
Vertical grip



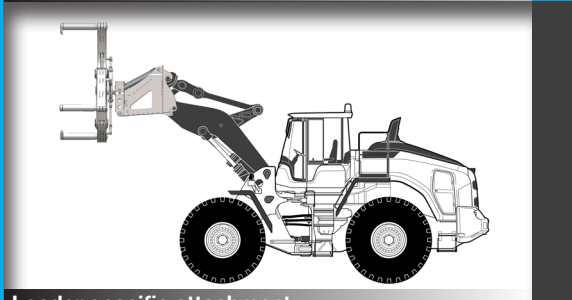
Integrated IR-camera system



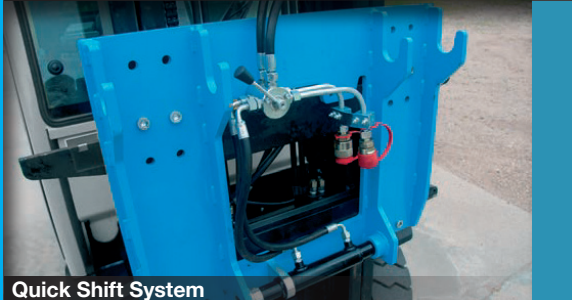
FEM IV / V attachment



Terminal Vest attachment



Loader specific attachment



Quick Shift System



Tools for handling rings and rims

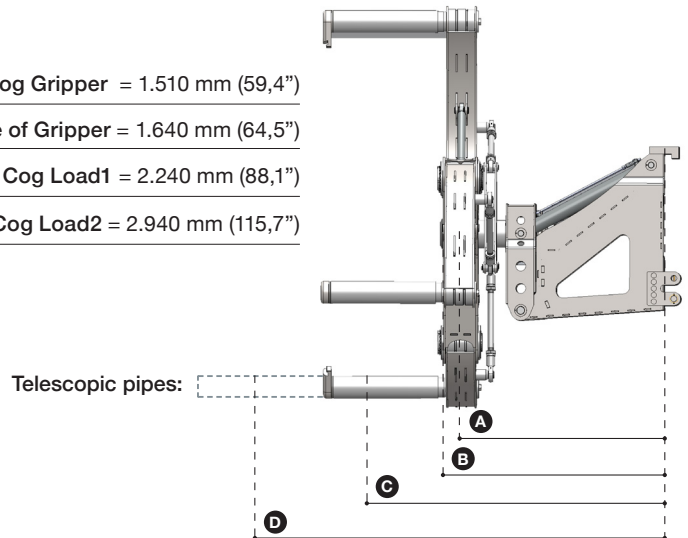


LED working light

Technical Specifications

Weight:	3.000 kg (6.600 lbs)
Lifting capacity:	4.000 kg (8.800 lbs) at C from B 650 mm 2.600 kg (5.720 lbs) at D from B 1.300 mm
Tyre diameter:	1.530 - 3.100 mm (60-122")
Standard pipes:	Ø 180 x 900 mm (7 x 35,4")
Telescopic pipes:	Ø 180 x 1.700 mm (7 x 66,9")
Attachment:	FEM IV / V / Terminal Vest / Loader specific

- A** Cog Gripper = 1.510 mm (59,4")
- B** Face of Gripper = 1.640 mm (64,5")
- C** Cog Load1 = 2.240 mm (88,1")
- D** Cog Load2 = 2.940 mm (115,7")



Technical Requirements of forklift or loader

Lifting capacity:	Individual calculation
Electrical:	12 V supply / 10 A
Hydraulic:	1 double acting connection
Pressure min-max:	150-250 bar (2.175-3.626 psi)
Return pressure:	max. 10 bar (145 psi)
Flow:	max. 50 l/min. (13 gal/min.)

Authorized Dealer



+45 72 344 344
 info@justeasytools.dk
 www.justeasytools.dk
 VAT no.: DK33644809

Just Easy Tools ApS
 Nupark 51
 DK-7500 Holstebro
 Denmark