



# TRUCK LONG HAUL

## MAGNA MSL STEER/ALL POSITION

The Magna MSL is a steer axle / all position tyre optimized for long haul, highway use.

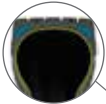
Five ribs with four wide, straight grooves for precise handling and outstanding traction.



Special designed, shallower tread pattern for exceptionally long mileage.



All steel radial construction. Improved protector plies optimize load performance and operator comfort.



New improved technology of the high-tech casing reduces heat build-up inside the tyre.



Tyre size	Pattern	Load speed	OD (mm)	SW (mm)	TD (mm)	Single max. load (kg)	Rim	Tyre weight (kg)	TT/TL	PR
12R22.5	MSL	152/149L	1085	300	15.5	3550/3250	9.0	60	TL	18



**Magna Tyres Group**

P.O. Box 436, 5140 AK Waalwijk, The Netherlands  
Elzenweg 7, 5144 MB Waalwijk, The Netherlands

Phone: +31 416 675 220, Fax: +31 416 820 037  
Email: [info@magnatyres.com](mailto:info@magnatyres.com), [www.magnatyres.com](http://www.magnatyres.com)

